

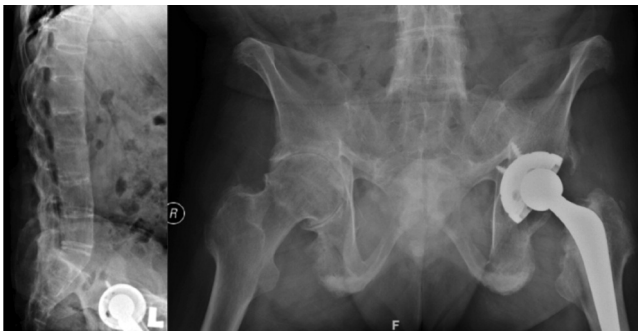
# ORTHOPAEDIC CLINICAL QUIZ

The following questions are based on the photographs and images provided. Answers and further information are available in Page 64 & 65

**Aizah N, Mansor A, Ahmad TS**

Department of Orthopaedic Surgery, University of Malaya, Kuala Lumpur, Malaysia

We would like to acknowledge the Conjoint Board of Orthopaedics Malaysia and contributors who have made this material available.



## Question 1

A 38-year old man presented with progressive right hip pain and stiffness. He had previously undergone a left total hip replacement for a similar problem.

- List the radiographic changes in the pelvis and the spine. (2 marks)
- What is the diagnosis? (1 mark)
- List three difficulties anticipated for total hip replacement surgery in this case? (4 marks)
- Name three complications that may be associated with total hip replacement in this group of patients? (3 marks)



## Question 2

A 17-year old boy with a 2-year history of traumatic brain injury, presented with gradual right hip stiffness.

- Describe the pathological process that has occurred. (2 marks)
- List four possible risk factors associated with this condition. (2 marks)
- What preventive measures can be taken in patients with high risk of developing this condition? (4 marks)
- How can this condition be treated? (2 marks)



## Question 3

A 34-year old man sustained this fracture after being involved in a motor vehicle accident.

- Describe and classify the fracture. (2 marks)
- Describe the surgical approach and internal fixation method for the fracture. (4 marks)
- List two complications associated with this type of fracture. (2 marks)
- What is the Hawkins sign and what does it signify? (2 marks)



#### Question 4

A 2-year old girl presented with rigid rocker-bottom deformity of both feet since birth. Lateral view radiographs of both feet are shown.

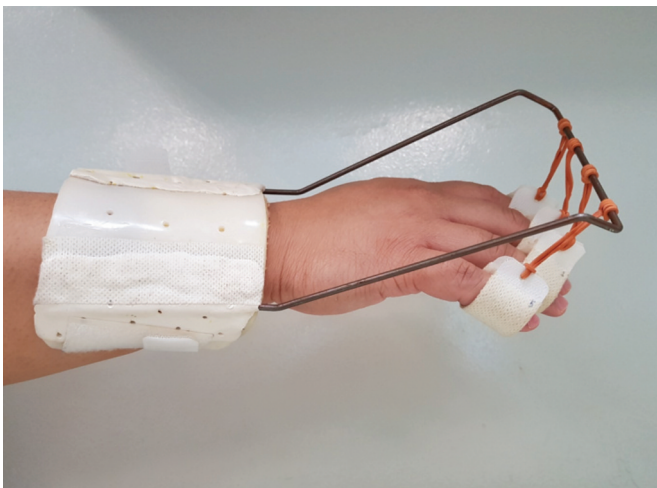
- Describe three anomalies seen on the radiographs. (3 marks)
- What is the most likely diagnosis? (1 mark)
- Name two other conditions associated with this disorder. (2 marks)
- Describe two treatment options for answer (b). (4 marks)



#### Question 5

A lower limb orthosis is shown.

- Name the orthosis. (1 mark)
- State two conditions for which this orthosis is indicated. (2 marks)
- List four contraindications for the use of this orthosis. (4 marks)
- How does this orthosis help during the gait cycle? (2 marks)
- What material is this orthosis typically made of? (1 mark)



#### Question 6

The picture shows an upper limb orthosis.

- Name the orthosis. (1 mark)
- State two indications for which this orthosis is applied. (2 marks)
- What movements in the hand does this splint allow? (2 marks)
- List three objectives for the application of this splint? (3 marks)
- State two contraindications for the of this orthosis. (2 marks)