

The tilted table: A rare case of complete posterior column tibial plateau fracture

¹Ling JL; ¹Maniventhan N; ²Manoharan K

¹Orthopedic Department, Hospital Raja Permaisuri Bainun Ipoh, Perak, Malaysia.

INTRODUCTION:

Posterior column fracture is an uncommon type of tibial plateau fracture¹. It is not easy to identify such fracture without assistive radiological modalities such as computer tomography (CT) scans. Only then can the best method of treatment can be rendered. We report of such a case encountered at our centre.

REPORT:

A 40 years old factory worker was presented to following an industrial injury with suspected tibial plateau fracture, with no skin changes nor swelling. Configuration of fracture undetermined, CT scan was done which revealed complete posterior column of tibia plateau fracture. Prone position was opted with posterior approach for better reduction of the fracture³. Post operatively, patient was good healing with no arising complications. Subsequent follow up had patient ambulating without aid with complete union of the fracture.

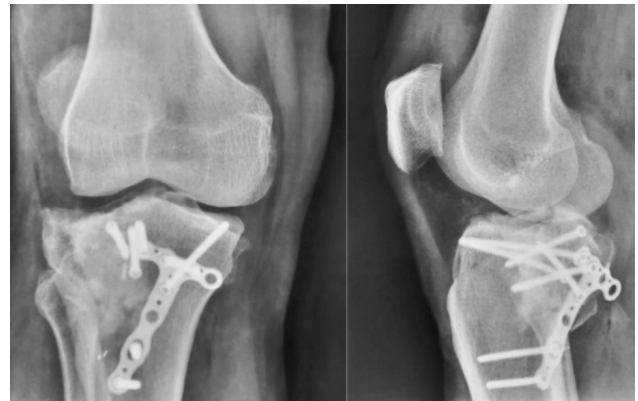


Figure 3: Post-operative X rays

CONCLUSION:

Radiographic modalities such as CT scan plays a vital role to make definite diagnosis and to plan the surgical approach. The difficult reduction of the posterior tibial plateau fracture is made easier with prone position and posterior approach.

DISCUSSION:

Proper preoperative planning with utilization of assistive radiological methods can definitely help in making better preoperative planning for patients benefit.

REFERENCES:

1. K.C.Lin, Y.W.Tarng, G.Y.Lin, S.W.Yang, C.J.Hsu, J.H.Renn, Prone and direct posterior approach for management of posterior column tibial plateau fractures, *Orthopaedics & Traumatology: Surgery & Research*, Volume 101, Issue 4, 2015, Pages 477-482
2. Foster, Brock MD; Rodriguez-Buitrago, Andres MD; Obremskey, William T. MD Prone Posteromedial Approach for Posterior Column Tibial Plateau Fractures, *Journal of Orthopaedic Trauma*: August 2020 - Volume 34 - Issue - p S35-S36

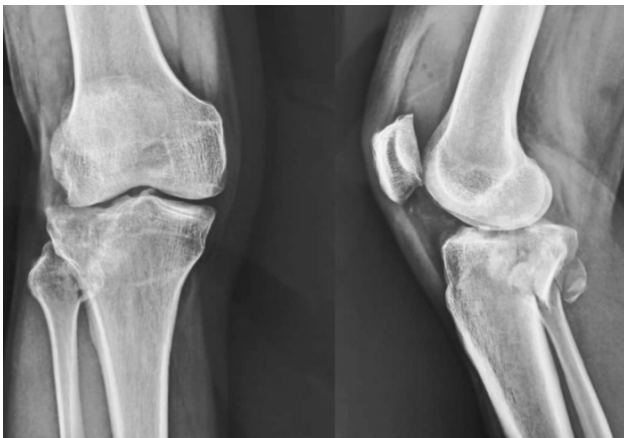


Figure 1: Pre-operative x-ray image



Figure 2: CT knee shows fracture configuration