

Lateral Window Only Approach for Acetabular Anterior Column and Posterior Hemitransverse Fracture Fixation

¹Lim TC; ²Norhaslinda B; ²M.Azfan CY

¹Department of Orthopaedics, Faculty of Medicine and Health Sciences, Universiti Malaysia Sarawak, Malaysia

²Department of Orthopaedics and Traumatology, Hospital Tuanku Ja'afar Seremban, Malaysia

INTRODUCTION:

Acetabular fractures are becoming more common nowadays with the increased use of automobiles. With the increased prevalence there is also more diverse surgical approaches for the fixation of acetabular fractures. Choosing an appropriate approach is vital for acetabular fixation surgery. (1) Here, we describe a case of acetabular anterior column with posterior hemitransverse fracture fixation using only lateral window in a patient who had undergone exploratory laparotomy in order to prevent risk of contamination from incisional hernia.

REPORT:

A 29 years old gentleman was involved in motor vehicle accident whereby he sustained polytrauma with intracranial bleeding, intraabdominal with chest injury and right acetabular fracture. He went in for exploratory laparotomy for the intraabdominal injury under emergency setting when he first presented to emergency department. Computed tomography (CT) revealed right acetabular anterior column with posterior hemitransverse fracture. Ideally, anterior approach would be utilized for the fracture fixation but in order to avoid previous midline surgical scar and possibility of contamination of surgical site with incisional hernia, only lateral window is developed for the fixation of the acetabulum fracture with plates and screws. Post operative wound was clean and no complication encountered intraoperatively or developed post operatively following the surgical approach. Satisfactory reduction was achieved radiographically but unfortunately patient had a poor Glasgow Coma Scale (GCS) recovery and functional outcome could not be determined.

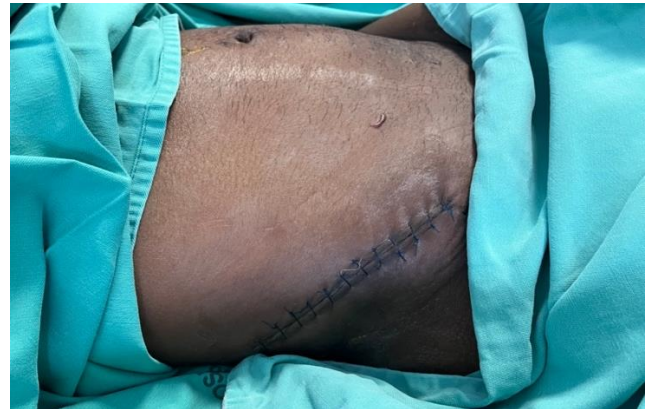


Figure 1: Surgical incision of the lateral window only approach

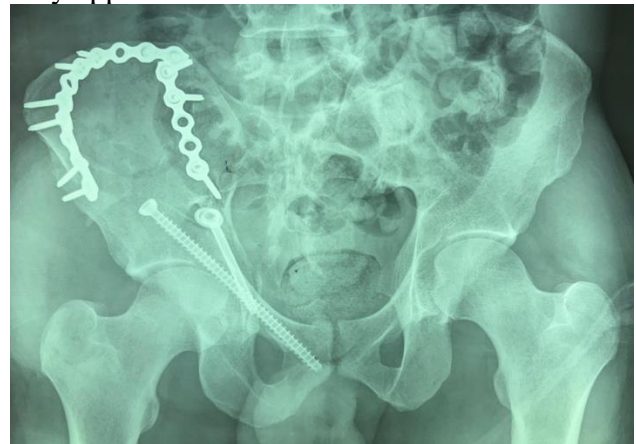


Figure 2: Post operative pelvis AP radiograph

CONCLUSION:

This report demonstrates the feasibility of lateral window only approach for acetabular fixation, especially in patients who have undergone abdominal surgery whereby the strength of abdominal wall repair is uncertain and risk of contamination from incisional hernia is present.

REFERENCES:

1. Mårdian S, Schaser KD, Hinz P, et al. Fixation of acetabular fractures via the ilioinguinal versus pararectus approach. *Bone Joint J.* 2015;97:1271–1278.