

Bilateral Scapular Fractures with Left Floating Shoulder

¹Razali, MF; ¹Mohamed Saat, MA; ¹Din, MH

¹Orthopaedic Department, Hospital Universiti Sains Malaysia, Kubang Kerian, Kelantan, Malaysia.

INTRODUCTION:

Bilateral scapular fracture is rare and infrequently reported in the past¹. It usually occurs in event of electrical shock, epileptic seizures and polytrauma case. Of the cases mentioned in the literature, only few that had undergone operative intervention.

REPORT:

We are reporting a case of a 30 years old right-handed petrol pump station attendant who involved in motor vehicle accident and complained of bilateral shoulders pain with no neurovascular compromise and other associated injuries.

Plain radiographs showed bilateral neck of scapular fracture with comminuted fracture midshaft of left clavicle. Gleno-polar angles were 39°, 38° of right side and left side respectively. There was 1 cm shortening of left clavicle and the fracture site was medial to coracoid-clavicular ligament.

Discussion made with patients regarding need for clavicle internal fixation to help stabilize the left floating shoulder and conservative treatment decision for bilateral scapular fractures. Patient was not keen and during follow up, the fractures were not further displaced. There was also partial restoration of bilateral shoulder active range of motion. Thus, he was fully treated conservatively for all fractures with bilateral armlings.

Treatment of bilateral scapular fracture depends on few factors such as open fracture, degree of fracture angulation or displacement, glenoid involvement, associated injuries including scapulothoracic dissociation and patient compliance².



Figure 1: Chest AP radiograph

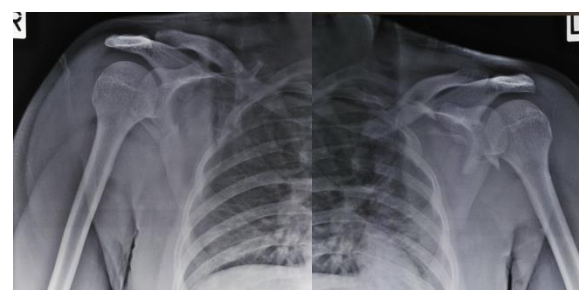


Figure 2: Bilateral shoulders radiographs

CONCLUSION:

The bilateral scapular fracture is uncommon and in case with association of clavicle fracture is even rarer. Surgical intervention is indicated in the unstable fracture as demonstrated in this case. However further evaluation should be considered.

REFERENCES:

1. Tuček M, Bartoníček J, Novotný P, Voldřich M. Bilateral scapular fractures in adults. *Int Orthop.* 2013 Apr;37(4):659-65. doi: 10.1007/s00264-013-1778-8. Epub 2013 Feb 24. PMID: 23436152; PMCID: PMC3609996
2. Zengui, F. Z., Zengui, Z. F., Halemi, M. A. el, Sennouni, M., Fargouch, M., Andaloussi, Y. el, Haddoun, A. R., & Fadili, M. (2021). Bilateral Scapular Fracture: A Case Report. In *AJCRS* (Vol. 6, Issue 3). <http://www.sdiarticle4.com/review-history/64669>